

Advanti® RACING



ADVANTI RACING 2019

ADVANTIWHEEL.COM

  @ADVANTIRACINGUSA

Advanti®

RACING

INSPIRED BY...

Inspired by a passion for sport-luxury tuning vehicles, Advanti Racing meticulously crafts every wheel design with precision and forward styling. At the core of every wheel produced is an unsurpassed level of quality. The Advanti Racing brand has been increasing heart rates and supplying drivers with adrenaline overdoses for decades. Advanti Racing's history in F1 racing is the foundation on which every wheel is built and the result is a wheel for any automotive enthusiast.



Advanti[®]
RACING

Advanti
DST

TABLE OF CONTENTS

PG1 ADVANTI RACING

PG4 DECADO

PG7 HYBRIS, FASTOSO

PG10 HYDRA, RASATO

PG13 FURY, DIECI

PG2 TABLE OF CONTENTS

PG5 VIGOROSO V1

PG8 VIGOROSO, CAMMINO

PG11 CATALAN, BELLO

PG14 TURBINA, FORCHETTE

PG3 APPELLO

PG6 STORM S1

PG9 SVELTO, CLASSE

PG12 TORCERE, DIVISO

N E W F O R 2 0 1 9



VIGOROSO V1
17", 18", 19"



APPELLO
18", 19", 20"



DECADO
18", 19", 20"



A APPELLO

SERIES CODE: AP

DYNAMIC SPINNING TECH
DST

The Advanti Racing Appello is a unique, split-5 spoke, Flow Formed design that embraces forward styling through PCD and spoke details. The Appello is offered in a rich, Gloss Graphite finish with a milled and machined PCD area. The Appello offers superior brake caliper clearance and is an ideal choice for sport tuning vehicles.

FITMENTS: 18x8.5, 19x8.5, 19x9.5B, 20x8.5
20x9A, 20x10B

FINISHES:



FOR MORE DETAILS, SPECS & MEDIA GO TO ADVANTIWHEEL.COM



A DECADO

SERIES CODE: DA

DYNAMIC SPINNING TECH
DST

The Decado is Advanti Racing's latest split 5-spoke design. The Decado is developed with Advanti Racing's DST, Flow Forming Technology process to ensure function and reliability are at the very core of this design. The Dark Anthracite Metallic finish offers so much depth to this wheel and is the perfect answer to those looking for a darker wheel option without losing the details.

FITMENTS: 18x8.5, 19x8.5, 19x9.5B, 20x8.5
20x9A, 20x10B

FINISHES:



FOR MORE DETAILS, SPECS & MEDIA GO TO ADVANTIWHEEL.COM



VIGOROSO V1

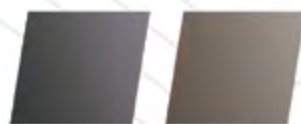
DYNAMIC SPINNING TECH
DST

SERIES CODE: V1

The Vigoroso V1 is a classic mesh styled wheel that has been developed by utilizing Advanti Racing's DST, Flow Forming Technology process. With a wide range of sizing, fitments and 2 different spoke profiles, The Vigoroso V1 is an ideal wheel option for so many passenger vehicles especially those looking to stagger fit.

FITMENTS: 17x8, 18x8.5, 18x9.5B, 19x8.5, 19x9.5B, 19x10B

FINISHES:



FOR MORE DETAILS, SPECS & MEDIA GO TO ADVANTIWHEEL.COM



STORM S1

SERIES CODE: SM

DYNAMIC SPINNING TECH
DST

The Advanti Racing Storm S1 is developed utilizing Flow Forming Technology. This wheel is incredibly lightweight while offering all of the reliability that should be expected from a flow formed wheel. The Storm S1 is a 10-spoke, tuning inspired wheel that has become one of Advanti Racing's most popular designs.

FITMENTS: 15x7, 15x8, 15x9, 17x7, 17x8, 17x9

FINISHES:



FOR MORE DETAILS, SPECS & MEDIA GO TO ADVANTIWHEEL.COM

A HYBRIS

SERIES CODE: HY

The Hybris is a precisely developed split 5-spoke design. It's wide range of sizing and vehicle fitments allow the Hybris to improve the look and stance of many popular vehicles. This design is the perfect complement to any vehicle.

FITMENTS: *17x7.5, *18x8, 19x8.5,
19x9.5, 20x8.5

FINISHES:



DYNAMIC SPINNING TECH
DST

* = Not DST



A FASTOSO

SERIES CODE: FS

The Fastoso is Advanti Racing's take on combining a multi-spoke and mesh design. Its unique undercut flange provides a visual separation between the barrel and spokes of the wheel. This modern design is ready to enhance the stance of most popular passenger vehicles.

FITMENTS: 18x8, 19x8.5, 19x9.5, 20x9,
20x10

FINISHES:



VIGOROSO

SERIES CODE: VI

The Vigoroso is a clean and precisely crafted, split 5-spoke design that is both modern and timeless. The Vigoroso has been developed utilizing Advanti Racing's unique DST, Flow Forming Technology process and is available in many popular fitments and applications.

FITMENTS: 17x7.5, 18x8, 18x9, 19x8.5, 19x9.5, 20x9

FINISHES:



DYNAMIC SPINNING TECH
DST



CAMMINO

SERIES CODE: CO

The Cammino is a precise 5-spoke design that has been developed specifically for the sport tuning enthusiast. Utilizing Advanti Racing's DST, Flow Forming technology, the Cammino offers a strong visual impact with an end product that is lighter, stronger and has more elongation than a traditional cast design.

FITMENTS: 18x8, 18x9B, 19x8.5, 19x9.5B, 20x9, 20x10B, 20x11B

FINISHES:



DYNAMIC SPINNING TECH
DST

A SVELTO

SERIES CODE: SV

The Svelto is a Flow Formed, 12-spoke, Face-Forward design that offers fitments for many popular passenger vehicles. It's clean and timeless styling makes the Svelto a wonderful compliment to a vehicles overall appearance.

FITMENTS: 18x7.5, 18x8, 18x9, 19x8.5, 19x9.5, 20x9, 20x10

FINISHES:



DYNAMIC FINISHING TECH
DFT



A CLASSE

SERIES CODE: CL

The Classe is Advanti Racing's tribute to a classic mesh design. Simple and elegant was the inspiration and the result is a wheel that can separate any enthusiast vehicle from the rest of the crowd.

FITMENTS: 18x8, 18x9, 19x8.5, 19x9.5, 20x9, 20x10

FINISHES:



A HYDRA

SERIES CODE: HD

The Hydra is a Face-Forward split 5-spoke design that offers extraordinary brake caliper clearance and stance for many popular passenger vehicles. The Hydra is developed using Advanti Racing's DST, Flow Forming technology to offer the user a state of the art product.

FITMENTS: 18x8, 18x9.5, 19x8.5, 19x9.5, 20x9, 20x10

FINISHES:



DYNAMIC SPINNING TECH
DST



A RASATO

SERIES CODE: RA

The Rasato is an elegant and clean split 5-spoke design. With a large sizing and fitment range, the Rasato is the perfect wheel design to upgrade the appearance of most popular passenger vehicles.

FITMENTS: 17x7.5, 18x8, 19x8.5, 20x8.5

FINISHES:



A CATALAN

SERIES CODE: CM

The Advanti Racing Catalan is a clean and modern take on a multi-spoke design. Through Advanti Racing's DST, Flow Forming Technology process, the Catalan offers a strong and extremely reliable wheel to enhance the appearance of most passenger vehicles.

FITMENTS: 19x8.5, 19x9.5, 20x8.5, 20x10

FINISHES:

DYNAMIC SPINNING TECH
DST



A BELLO

SERIES CODE: BO

The Bello is a Matte Black, Face-Forward design that provides most popular passenger vehicles with a tough yet modern look. Its double split-5 spoke design provides a mesh feel that allows this style to complement any vehicle.

FITMENTS: 18x8, 19x8.5, 19x9.5, 20x9, 20x10

FINISHES:



TORCERE

SERIES CODE: TO

The Torcere is Flow Formed, 10-spoke design that is offered in 19 and 20" staggered fitments. Available in multiple finishes, the Torcere is a great option to accessorize many passenger vehicles.

FITMENTS: 19x8.5, 19x9.5, 20x9, 20x10

FINISHES:



DYNAMIC SPINNING TECH
DST



DIVISO

SERIES CODE: DS

The Advanti Racing Diviso is a Face-Forward design that offers a modern twist to achieve a mesh-like appearance. The Diviso's spoke and machining details make this design absolutely unique.

FITMENTS: 18x8, 19x8.5

FINISHES:



FURY

SERIES CODE: FY

The Advanti Racing Fury is inspired and designed with the modern Mustang enthusiast in mind. Sizing and specification have specifically been created around the optimal stance for a Ford Mustang

FITMENTS: 19x9, 19x10, 20x9, 20x10

FINISHES:



DYNAMIC SPINNING TECH
DST



DIECI

SERIES CODE: DI

The Dieci offers a simplistic, 10-spoke, Face-Forward design that will enhance the look of many passenger vehicles. Its long spoke design provides the appearance of a larger diameter wheel while toughening up the stance of a vehicle.

FITMENTS: 18x8, 18x9, 19x8.5, 19x9.5, 20x9, 20x10

FINISHES:



TURBINA

SERIES CODE: TB

The Advanti Racing Turbina provides a unique and almost directional design. Available in multiple finishes, the Turbina is offered for many popular passenger vehicles.

FITMENTS: 17x8, 18x8, 19x8.5

FINISHES:



FORCHETTE

SERIES CODE: FO

The Forchette's unique design provides mesh inspiration with a futuristic twist and is available for many popular passenger vehicles.

FITMENTS: 17x8, 18x8

FINISHES:



Advanti[®]

RACING



TOLL FREE 877.591.1001
LOCAL 909.591.1001

ADVANTIWHEEL.COM

  @ADVANTIRACINGUSA